

MONTHLY MEMBERSHIP PROGRESS REPORT

District 4 C1

Results as of: 9/30/2023

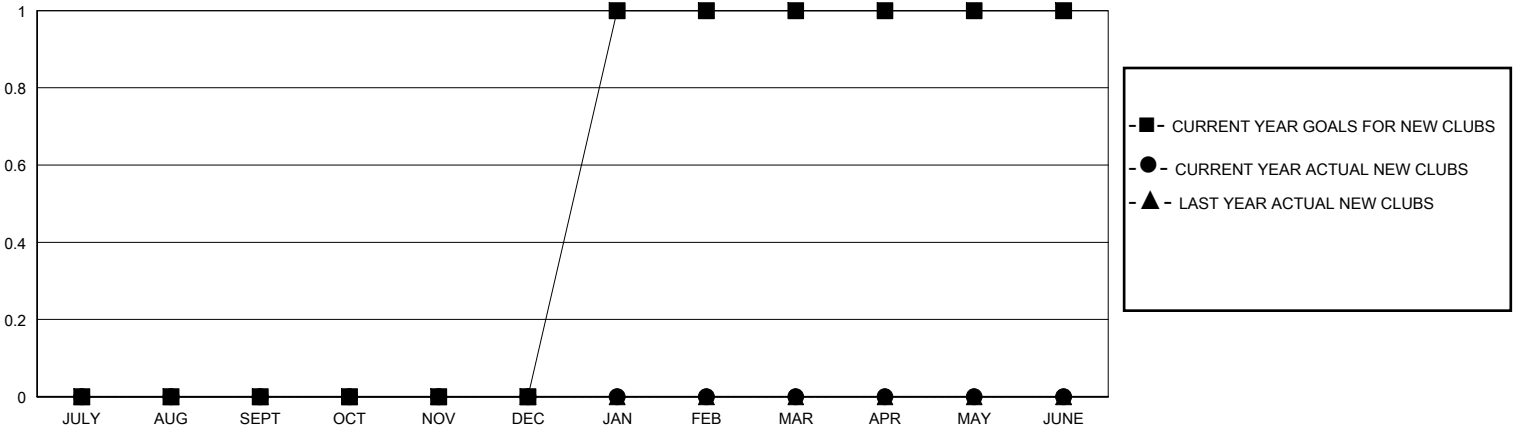
GMT:

LOCATION CALIFORNIA

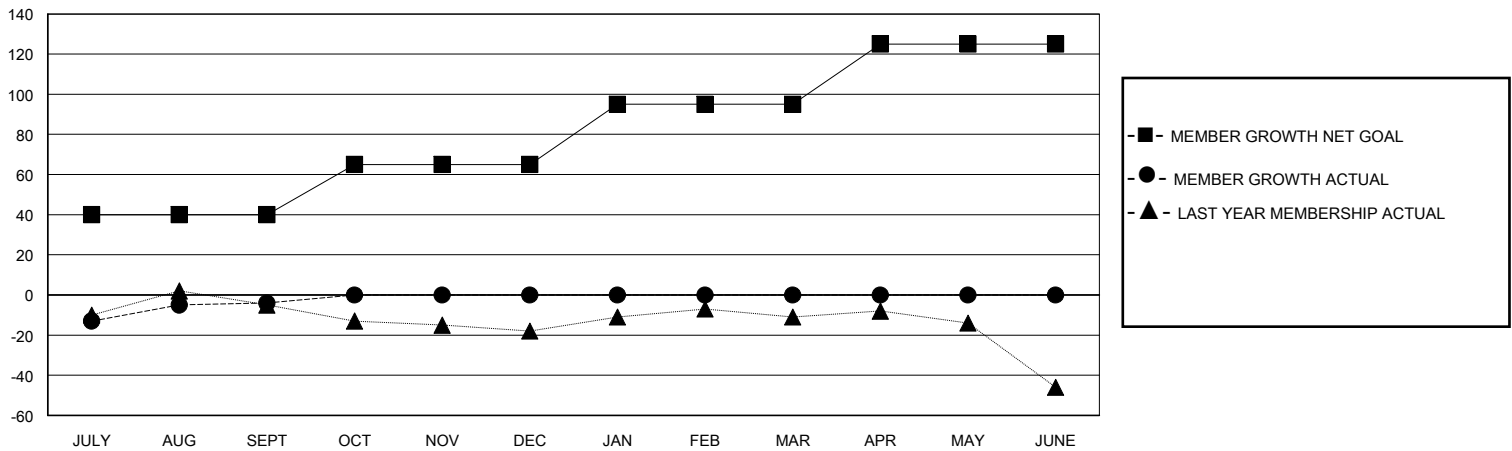
GMT CA

| Clubs | | | | Members | | | |
|-----------------------|---------------|-----------|---------------|-----------------------|------------------------|----------------------|----------------------------------------------|
| RESULTS FOR 2023-2024 | | | | RESULTS FOR 2023-2024 | | | |
| QUARTER | NEW CLUB GOAL | NEW CLUBS | DROPPED CLUBS | QUARTER | MEMBER GROWTH NET GOAL | MEMBER GROWTH ACTUAL | DROPPED MEMBERS ACTUAL (including transfers) |
| JULY/AUG/SEPT | 0 | 0 | 0 | JULY/AUG/SEPT | 40 | 32 | 28 |
| OCT/NOV/DEC | 0 | 0 | 0 | OCT/NOV/DEC | 25 | 0 | 0 |
| JAN/FEB/MAR | 1 | 0 | 0 | JAN/FEB/MAR | 30 | 0 | 0 |
| APR/MAY/JUNE | 0 | 0 | 0 | APR/MAY/JUNE | 30 | 0 | 0 |

GOALS AND ACTUAL NEW CLUBS CUMULATIVE



GOALS AND ACTUAL MEMBERS CUMULATIVE



| | | |
|----------------------------------------------------------------------------------|-----------------------------------------------------------|------------------------------------------------------------------------|
| DROPPED CLUBS: 0 | 13 CLUBS OF 36 ADDED 1 OR MORE NEW MEMBERS | GENDER DISTRIBUTION MALE 552 (64.11%) FEMALE 309 (35.89%) |
| DROPPED MEMBERS DECEASED 3 CLUB CANCELLED 0 OTHER 25 TOTAL 28 | CLICK HERE FOR CUMULATIVE MEMBERSHIP DATA | TOTAL FAMILY UNIT MEMBERS 176 FAMILY MEMBERS PAYING HALF DUES 91 |